

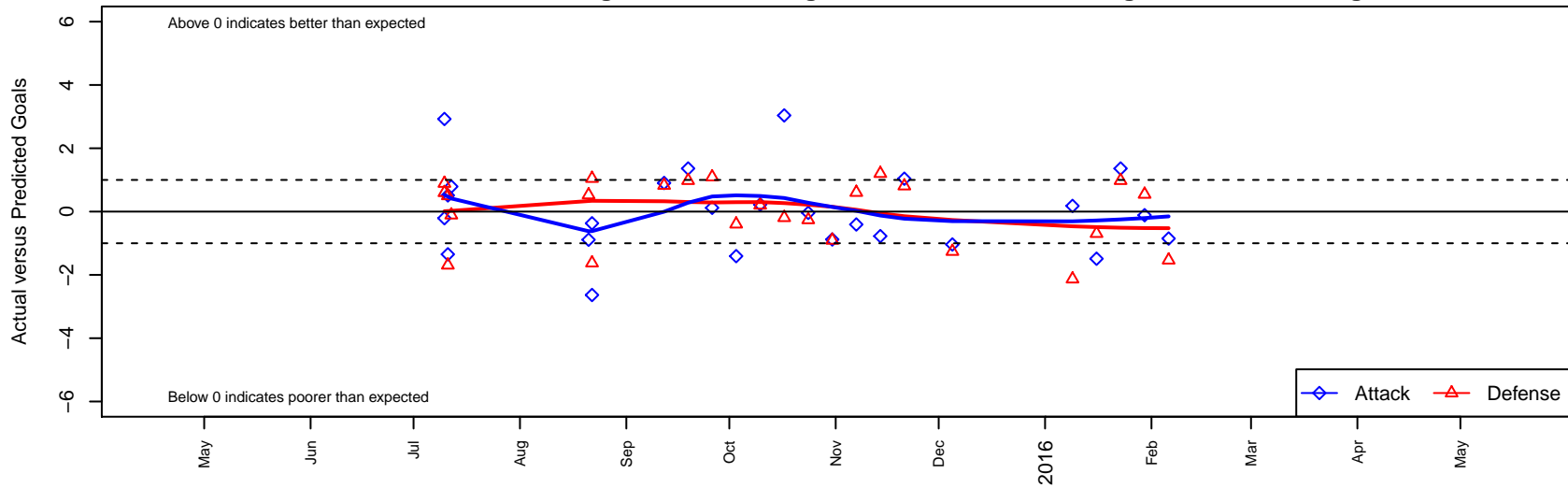
# BYSC Select Nicholson G03

Bellevue Youth SC  
 Bellevue, WA  
 G03 total strength=599  
 attack=0.51 defense=0.49  
 fall league = NPSL Div 1 U12

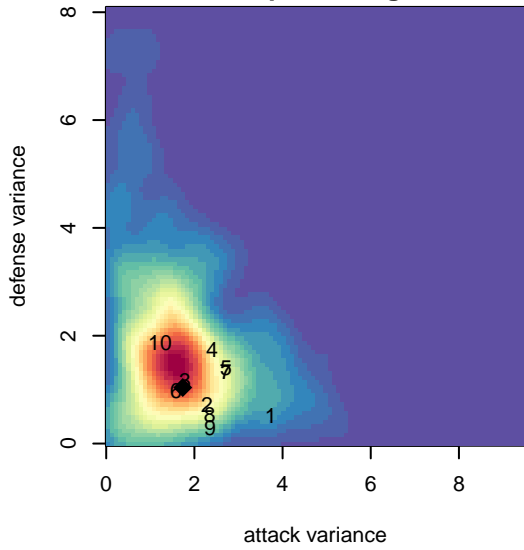
alt names used:  
 BELLEVUE YOUTH BYSC SELECT NICHOLS  
 BYSC Select G03  
 BYSC Select Nicholson  
 2015 BYSC Select GU12

Venues played:  
 2015 KCC GU12  
 2015 REDAPT Cup Gold U12  
 2015 NPSL Division 1 U12  
 2015 Founders Cup G03

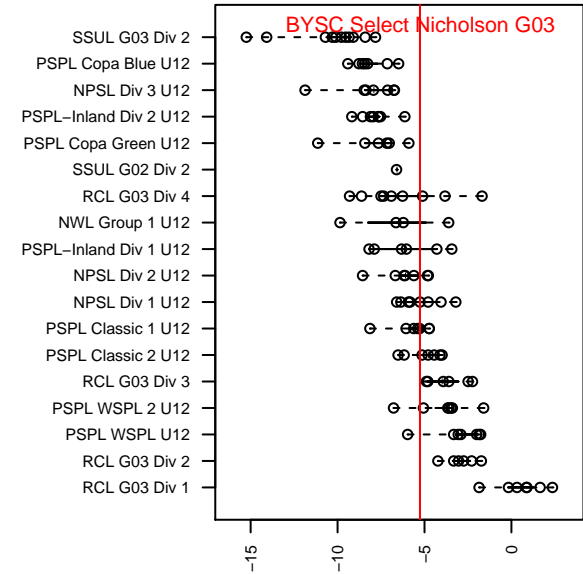
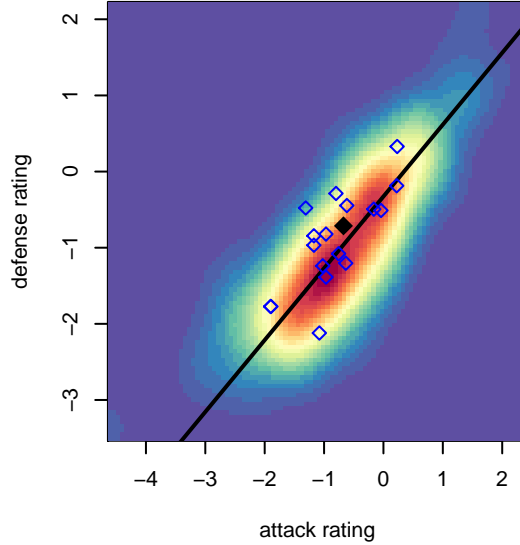
**BYSC Select Nicholson G03**  
 Dots are actual minus expected GF (blue circles) and GA (red triangles).  
 Blue line is smoothed change in attack strength. Red is smoothed change in defense strength.



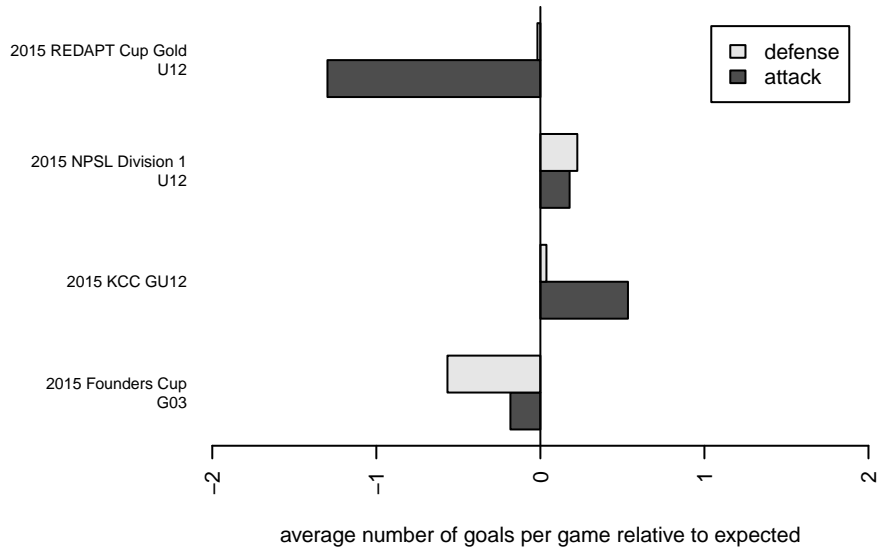
**attack and defense variance (black dot)  
relative to other teams  
and top 10 in region**



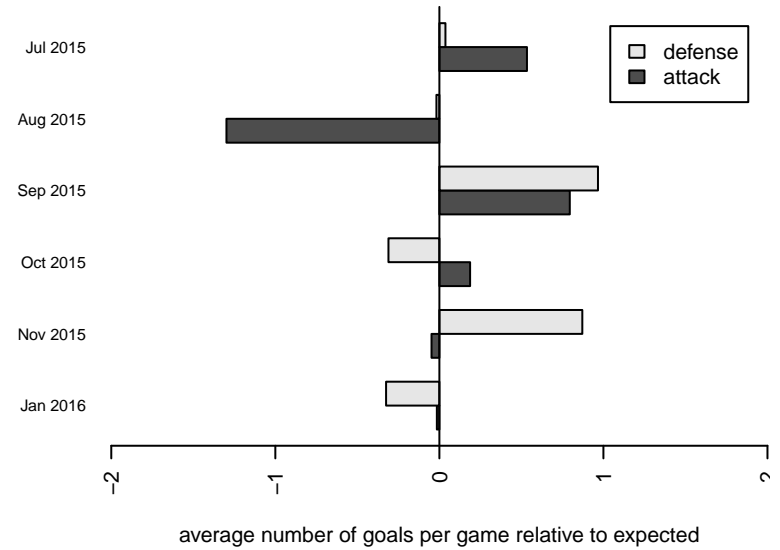
**attack and defense rating  
relative to others at age  
and all opponents in last 13 months**



**Performance relative to 13 month average**



**Performance relative to 13 month average**



| <b>date</b> | <b>home</b>                          |   | <b>away</b>                       |   | <b>venue</b>             | <b>pred.home</b> | <b>pred.away</b> |
|-------------|--------------------------------------|---|-----------------------------------|---|--------------------------|------------------|------------------|
| 2016-02-06  | BYSC Select Nicholson G03            | 0 | Pacific FC Breakers G03           | 3 | 2015 Founders Cup G03    | 0.85             | 1.47             |
| 2016-01-30  | BYSC Select Nicholson G03            | 1 | MIFC Lightning G03                | 0 | 2015 Founders Cup G03    | 1.11             | 0.54             |
| 2016-01-23  | BYSC Select Nicholson G03            | 3 | Crossfire Select MacDonald G03    | 0 | 2015 Founders Cup G03    | 1.64             | 0.98             |
| 2016-01-16  | Mukilteo Rush G03                    | 1 | BYSC Select Nicholson G03         | 2 | 2015 Founders Cup G03    | 0.31             | 3.49             |
| 2016-01-09  | BYSC Select Nicholson G03            | 1 | Seattle United Shoreline Blue G03 | 3 | 2015 Founders Cup G03    | 0.82             | 0.87             |
| 2015-12-05  | BYSC Select Nicholson G03            | 0 | Seattle United S Blue G03         | 3 | 2015 NPSL Division 1 U12 | 1.04             | 1.74             |
| 2015-11-21  | Seattle United NE Blue G03           | 0 | BYSC Select Nicholson G03         | 3 | 2015 NPSL Division 1 U12 | 0.81             | 1.96             |
| 2015-11-14  | PSA Force G03                        | 1 | BYSC Select Nicholson G03         | 0 | 2015 NPSL Division 1 U12 | 2.20             | 0.77             |
| 2015-11-07  | BYSC Select Nicholson G03            | 1 | NSC Spark G03                     | 0 | 2015 NPSL Division 1 U12 | 1.41             | 0.60             |
| 2015-10-31  | Crossfire Select Tacey G03           | 2 | BYSC Select Nicholson G03         | 0 | 2015 NPSL Division 1 U12 | 1.09             | 0.88             |
| 2015-10-24  | Seattle United S Blue G03            | 2 | BYSC Select Nicholson G03         | 1 | 2015 NPSL Division 1 U12 | 1.74             | 1.04             |
| 2015-10-17  | BYSC Select Nicholson G03            | 5 | Seattle United NE Blue G03        | 1 | 2015 NPSL Division 1 U12 | 1.96             | 0.81             |
| 2015-10-10  | BYSC Select Nicholson G03            | 1 | PSA Force G03                     | 2 | 2015 NPSL Division 1 U12 | 0.77             | 2.20             |
| 2015-10-03  | NSC Spark G03                        | 1 | BYSC Select Nicholson G03         | 0 | 2015 NPSL Division 1 U12 | 0.60             | 1.41             |
| 2015-09-26  | BYSC Select Nicholson G03            | 1 | Crossfire Select Tacey G03        | 0 | 2015 NPSL Division 1 U12 | 0.88             | 1.09             |
| 2015-09-19  | BYSC Select Nicholson G03            | 3 | Crossfire Select MacDonald G03    | 0 | 2015 NPSL Division 1 U12 | 1.64             | 0.98             |
| 2015-09-12  | NSC Fire G03                         | 0 | BYSC Select Nicholson G03         | 2 | 2015 NPSL Division 1 U12 | 0.83             | 1.10             |
| 2015-08-22  | Crossfire Premier Pingrey G03        | 1 | BYSC Select Nicholson G03         | 0 | 2015 REDAPT Cup Gold U12 | 2.05             | 0.37             |
| 2015-08-22  | Snohomish United Red G03             | 2 | BYSC Select Nicholson G03         | 0 | 2015 REDAPT Cup Gold U12 | 0.37             | 2.64             |
| 2015-08-21  | Crossfire OR WUSC Juventus -Unk2 G03 | 0 | BYSC Select Nicholson G03         | 0 | 2015 REDAPT Cup Gold U12 | 0.53             | 0.89             |
| 2015-07-12  | BYSC Select Nicholson G03            | 2 | FPSC Fury White G03               | 1 | 2015 KCC GU12            | 1.21             | 0.89             |
| 2015-07-11  | Mukilteo Rush G03                    | 2 | BYSC Select Nicholson G03         | 4 | 2015 KCC GU12            | 0.31             | 3.49             |
| 2015-07-11  | BYSC Select Nicholson G03            | 3 | Leavenworth G03                   | 0 | 2015 KCC GU12            | 4.35             | 0.50             |
| 2015-07-10  | Nortac Sparta White G03              | 0 | BYSC Select Nicholson G03         | 5 | 2015 KCC GU12            | 0.60             | 2.08             |
| 2015-07-10  | BYSC Select Nicholson G03            | 1 | FPSC Fury White G03               | 0 | 2015 KCC GU12            | 1.21             | 0.89             |